

Fitting and Operating Instructions

The coupling must be installed by authorised personnel! Read these instructions carefully before fitting!

Series RO*50flex

Automatic Trailer Coupling

e1*94/20*1360*00 Class C50-X

Suitable for:

- turntable drawbar trailers
- for drawbar eyes with a diameter of 50 mm
EG/94/20 class D 50, ISO 1102, DIN 74053, RO*57005

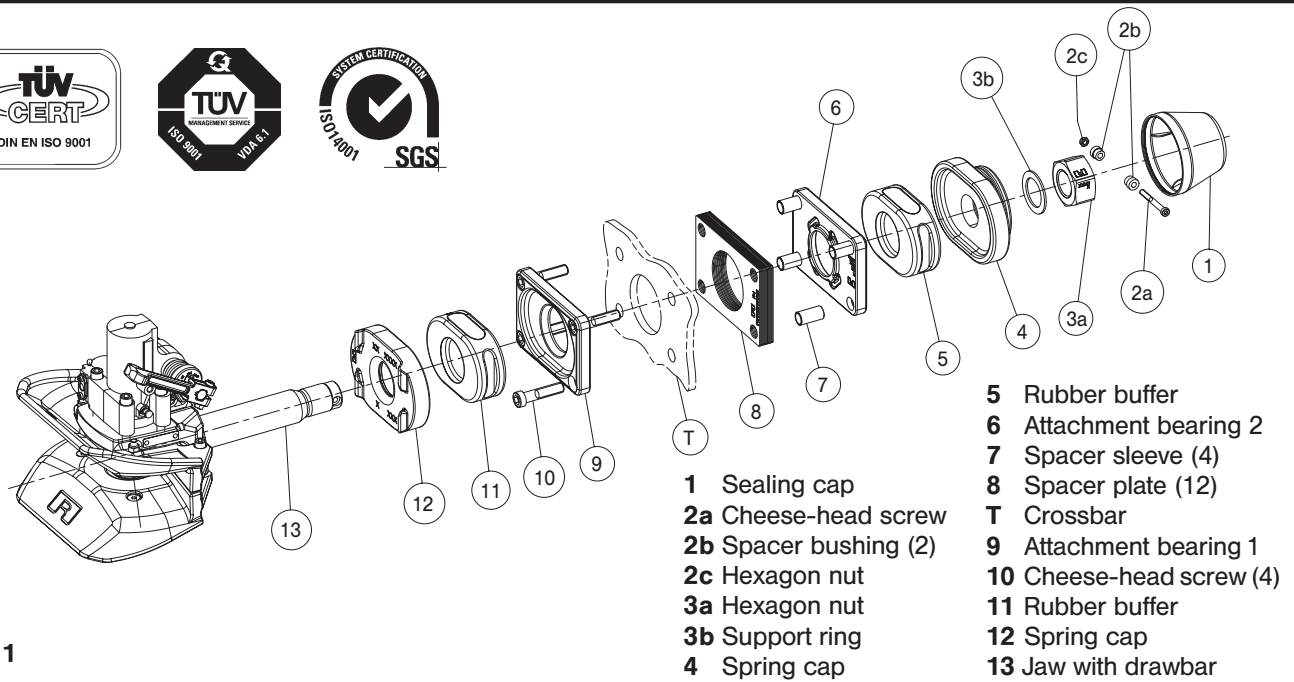


Fig. 1

- 5 Rubber buffer
- 6 Attachment bearing 2
- 7 Spacer sleeve (4)
- 8 Spacer plate (12)
- T Crossbar
- 9 Attachment bearing 1
- 10 Cheese-head screw (4)
- 11 Rubber buffer
- 12 Spring cap
- 13 Jaw with drawbar
- 1 Sealing cap
- 2a Cheese-head screw
- 2b Spacer bushing (2)
- 2c Hexagon nut
- 3a Hexagon nut
- 3b Support ring
- 4 Spring cap

Official note

When fitting the trailer coupling the regulations for fitting mechanical fastening systems in accordance with Appendix VII of Directive 94/20/EC and § 27 para. 1a item 6 of Germany's Federal Highway Code must be observed.

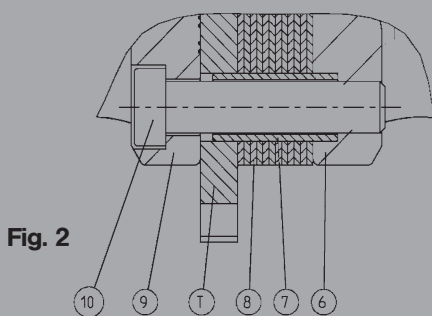


Fig. 2

T (mm)	12-13	14-15	16-17	18-19	20-21	22-23
8 (Number)	12	11	10	9	8	7
T (mm)	24-25	26-27	28-29	30-31	32-33	34-35
8 (Number)	6	5	4	3	2	1

1. Fitting

1.1 Before fitting

Note: When fitting the coupling observe:

- applicable national regulations
- vehicle manufacturer's mounting specifications
- clearance for axial turning of coupling head min. $\pm 25^\circ$

Fig. 1

- Loosen 2c and withdraw 2a
 - Withdraw 2b and unscrew 3a
 - Remove 3b, 4 and 5
 - Unscrew 10: remove 6, 8, 9 (11, 12 remain on 13)
- Take care** that 7 does not fall out!

Note: 1 in accompanying pack

Caution: Do not remove the copper grease from 3a, 3b, 4 and 13

1.2 Fitting

- Locate 9 externally on T
- Locate 10 (M 16 x 70, 8.8)
- Slide 8 corresponding to T max. (see table) from inside onto 10: T max. 36 mm, 1 x 8:2 mm (Fig. 2)
- Screw 6 (if necessary, after inserting 7) from inside to 10 (210 Nm)
- Carefully slide 13 with 12 and 11 through T
- Slide 5, 4 and 3b onto 13
- Tighten 3, **tightening torque 750 Nm**
- Locate 1 x 2b onto 2a
- Slide 2a and 2b through the bore in 3
- Locate 1 x 2b onto 2a and tighten with 2c: **tightening torque 25 Nm**
- Locate 1

Note: Before painting, close coupling.

It is essential to cover or grease coupling pin.

88192 GB | C 00

KE 0603 I 1296-GB
Subject to technical changes without prior notice

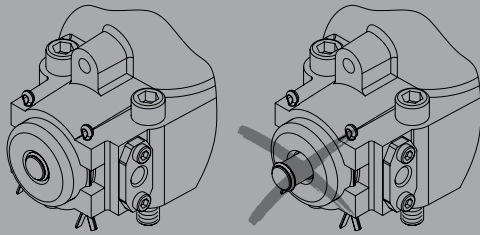


Operation



Truck with turntable trailer

Fig. 3



o.k.

Fig. 4

2. Operation

2.1 Hitching (Fig. 3)

Note: The relevant regulations must be observed when hitching and unhitching.

No one must stand between the vehicles!

- To engage, press lever upwards until it engages
- Position drawbar eye in centre of funnel
- Disengage brake on **front axle** of **turntable drawbar trailer**
- **Slowly** reverse prime mover

Check:

After every hitching operation it is essential to check that the coupling is engaged as specified in regulations.

The check pin must be **flush** with its guide bush after hitching (Fig. 4).

If the check pin protrudes (this can also be felt in the dark), this indicates that hitching has not been carried out correctly and that you are at **risk of an accident!**

The truck may not be driven with the trailer in this condition!

Remedy:

- Extend prime mover/trailer connection (drive approx. 1 m forwards and then reverse again)
- then **check again**

2.2 Closing coupling manually

(e.g. for tow-rope):

Lift coupling pin using suitable tool.

Note: Should the drawbar eye not activate the coupling pin during hitching, this can be because the necessary standby gap (gap between the drawbar eye and the coupling pin) is insufficient.

Servicing

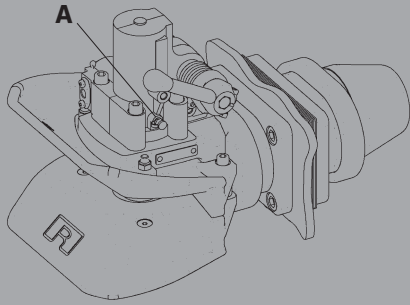


Fig. 5

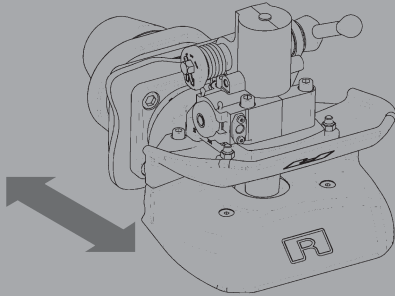


Fig. 6

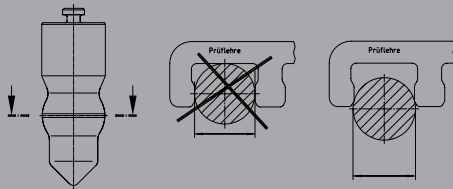


Fig. 7

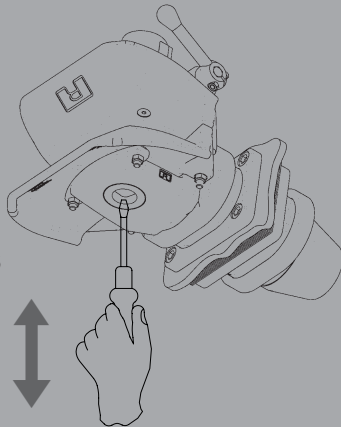


Fig. 8

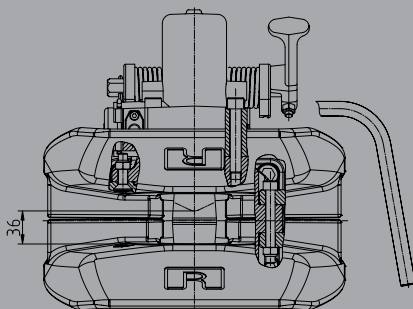


Fig. 9

3. Servicing

3.1 Maintenance

- Before first use and after extended period of use lubricate coupling pin, support and drawbar eye with viscous grease (EP3) with maximum water repellence.
- Grease automatic unit via lubricating point (A) with coupling open (see Fig. 5). It can also be connected to centralised lubricating system. Bearing requires no further lubrication.
- Close coupling before cleaning with high-pressure washers (see item 2.2).
- After cleaning, regrease coupling pin and support.

3.2 Testing

Bearing: Longitudinal play

- Move coupling head (not funnel) vigorously in direction of travel when unhitched (see Fig. 6):
No longitudinal play may be present.
- Replace rubber buffers if damping is reduced because of damage or wear.

Coupling pin:

- Diameter of crowned part may not less than **46 mm** otherwise new coupling pin must be used (see Fig. 7).

- Maximum vertical play on coupling pin (see Fig. 8) is **max. 5 mm**

Lower bush:

- Internal diameter of lower bush may not exceed **45,8 mm**
- There must be free passage downwards.

Upper bush:

- Internal diameter of upper bush may not exceed **49,2 mm**

Standby gap:

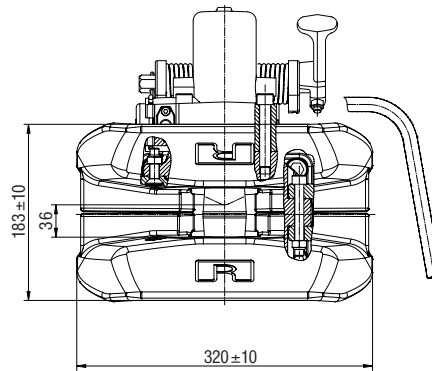
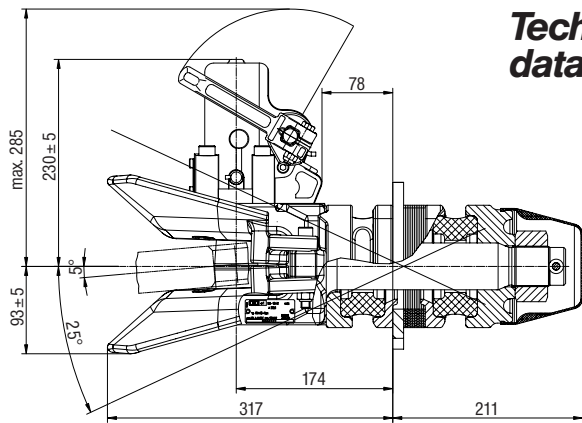
- Engaging point for drawbar eye must be **36 mm** (see Fig. 9).
- Always grease support well to reduce wear!

RO*50flex

e1*94/20*1360*00

Class C 50-X

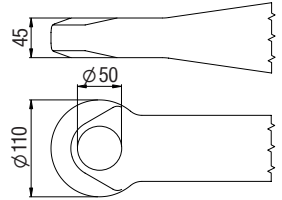
Technical data



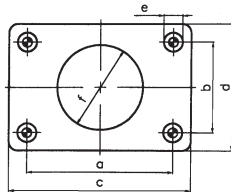
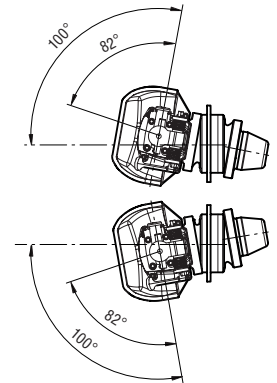
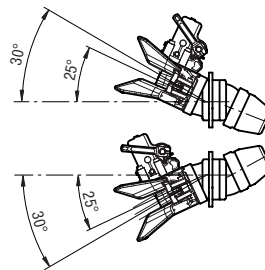
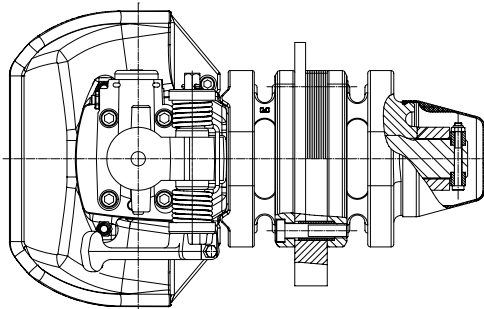
drawbar eye to fit

DIN 74053,
EG/94/20, ISO 1102

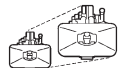
or
weldable drawbar eye
RO*57005



or similar type approved
drawbar eyes



	a (mm)	b (mm)	c (mm)	d (mm)	e (mm)	f (mm)
6	160	100	200	140	21	94



Order no.

506A6100

A

6

(mm)

160x100

D¹

(kN)

260

S

(kg)

-

(kg)

57

506B6100

B

6

160x100

260

-

57

¹ See catalogue

Pneumatic remote operation upgrade kit

Order no.

Basic RO*PC50flex B power actuating to open:
Content: part-turn actuator, control unit,
pneumatic connection kit

71244

Pneumatic remote operation upgrade kit

Order no.

Comfort RO*PC50flex C power actuating to open
and close: Content: part-turn actuator,
control unit, pneumatic connection kit

71242

Upgrade kit in-cab status indicator

70936

For spare parts see catalogue



Available from your specialist dealer

Member of JOST-World