

## Repair

Repair works only by skilled staff!

### 1. Changing the automatic unit and the coupling pin

**Attention:** The hand lever axle (10) should not be dismantled!

- Open coupling with the hand lever (9)

**Attention! Do not reach into the jaw!**

**THIS INVOLVES RISK OF AN ACCIDENT!**

- Loosen 4 hexagonal bolts (2)
- Remove automatic unit (3) in upwards direction
- Gently press automatic unit (3) with coupling pin (4) onto work bench (coupling pin 4 will fall out)

**When replacing the coupling pin, the safety lock must be replaced, too.** (see below)

- Remove old grease out of the automatic unit
- Insert new coupling pin into the body (upper bush 5)
- Attention:** The coupling pin should be withdrawn to the side of the safety lock (1)
- Before mounting automatic unit, push jaw stop bolt (3a) in direction of bore (6)
- Place automatic unit (3) lifting hand lever (9) slightly in the process and guiding throw-up lever (3b) into groove of coupling pin underneath retaining pin (4a) to enable coupling bolt to be raised from throw up lever and push jaw stop device into bore (6)
- Secure automatic unit (3) gently with screws (2)
- Press hand lever (9) gently upwards: check safety for fouling (1)
- Secure automatic unit (3) with screws (2):  
Tightening torque **49 Nm**  
Use screws M 10 x 60 DIN 912, grade 8.8!
- Lubricate via a lubrication nipple on the automatic unit only when coupling open (coupling pin in up position, ca. 120 g NLGI 2)

### 2. Changing the safety lock

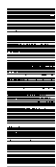
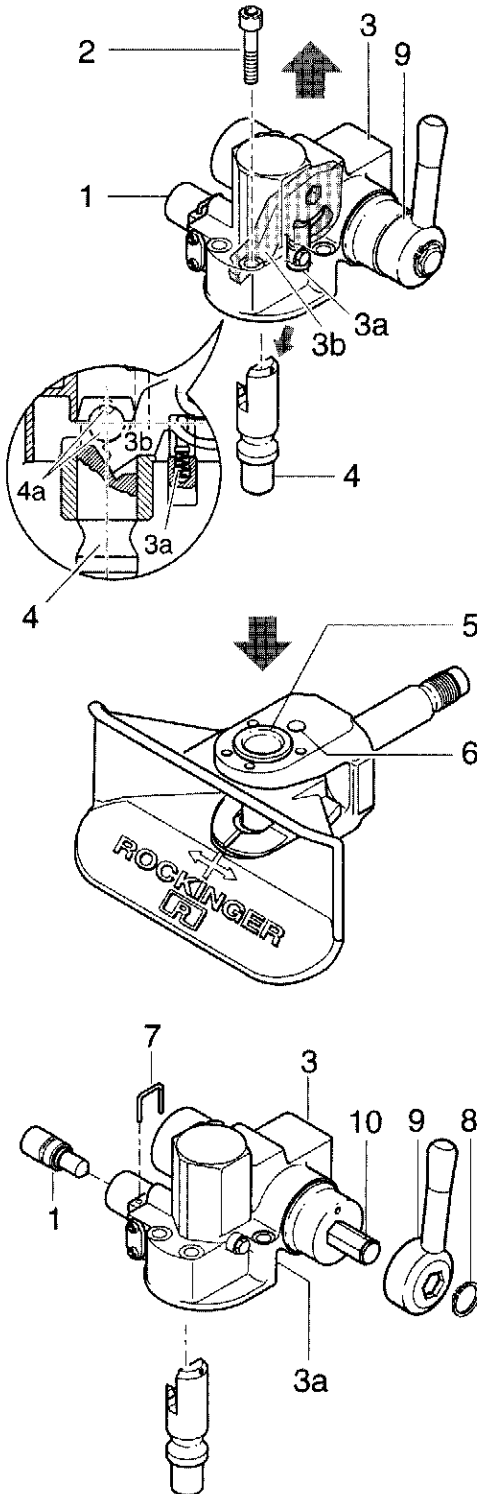
- Safety shackle (7) is to be bent up and withdrawn
- Safety lock (1) should completely be extracted out of the housing
- The new safety lock (1) is to be inserted
- Insert the new wire bar (7)
- Wire ends of the safety shackle are to be bent over

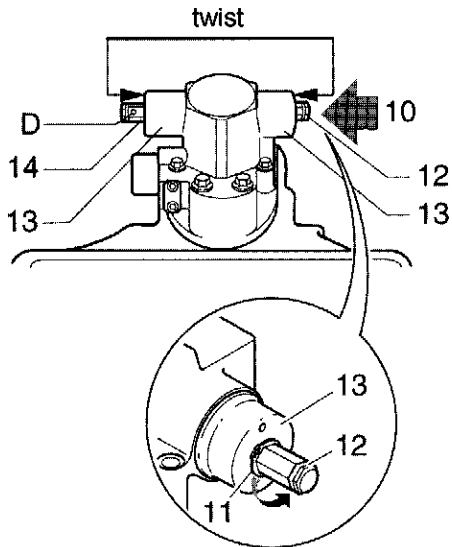
**Check:**

- Press hand lever (9) gently upwards: check safety for fouling (1)

### 3. Changing the hand lever

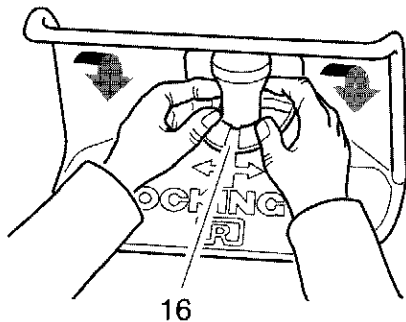
- Remove circlip (8) with circlip pliers A1 from hand lever axle (10)
- Dismantle hand lever (9)
- Fit new hand lever
- Secure new circlip with circlip pliers A1  
(do not overstretch circlip)





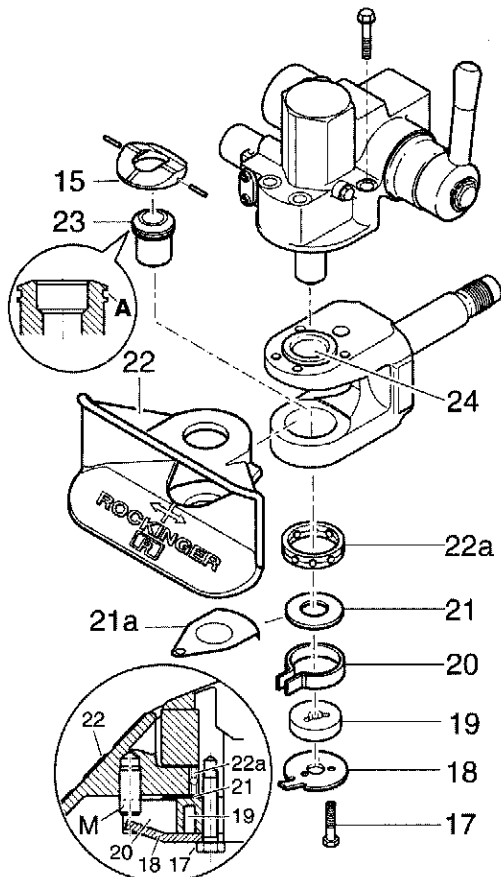
#### 4. Switching the hand lever over to left (repairset 71079)

- Remove circlip (8) with circlip pliers **A1** from hand lever shaft (10)
- Dismantle hand lever (9)
- Remove circlip (11) with circlip pliers **A1**
- Insert new circlip (18 x 1,5) into the groove (12)
- Clamp bearing washers (13) with suitable assembling tool (see illustr.) on left and right
- Knock hand lever axle (10) through carefully
- Dismount spacer (D)
- Remove circlip (14) with circlip pliers **A1**
- Insert new circlip (18 x 1,5) inside position
- Push hand lever into position
- Secure new circlip (18 x 1,5) circlip pliers **A1**: (take care to ensure interference fit)



#### 5. Changing the support ring

- Close coupling: **otherwise risk of accident!**
  - Raise coupling pin with suitable tool **or**
  - Strike hand lever knob briefly in opening direction with heel of hand
- Remove the support ring (15) with the help of the chisel which is to be placed on the lateral recesses
- Lift coupling pin with hand lever
- Take out support ring
- Clean support ring surface and groove
- Fit new support ring (with position marking **16** facing forwards)
- Both slot pins in the support ring (15) must be knocked into laterally



#### 6. Changing the jaw

- Close coupling (see point. 5)
- Loosen 3 screws (17) on base plate (18)
- Remove bottom part with guide bush (19), spring (20) and washer (21) or transmitter disk (21a) for turn-angle alarm system
- Raise coupling bolt with hand lever and lift out jaw (22)
- Insert new jaw (support ring **22a** is mounted in the jaw)
- Upward and downward support wear are to be greased
- Proceed with assembly in reverse sequence (pay attention to bore alignment; insert transmitter disk **21a** in correct position)
- When inserting screws, jaw must be located in central position: Spring surrounds retaining pin (**M**) on jaw
- Opening coupling: Jaw lock should be inserted
- Tighten screws (17) when the jaw is in the central position: **Tightening torque 30 Nm**
- Please, check the lock and movement of the jaw

#### 7. Changing the lower or /and the upper bush

- Dismantle coupling from crossbar
- Disassemble automatic unit with coupling bolt, jaw and support ring
- Squeeze lower bush (23) or / and upper bush (24)
- Press in new lower bush facing right direction (bush grooves **A** are to be parallel to the couplings central axle) or / and press in new upper bush
- Re-assemble and mount coupling, check function

**RO\*400:** Replacement of the bearing parts (Repair set) see mounting p. 1226