

ELETTROPOMPA cc VENTILATA 4500W CON TERMOCOPPIA

CODICE FAMIGLIA
FAMILY CODE

147-456

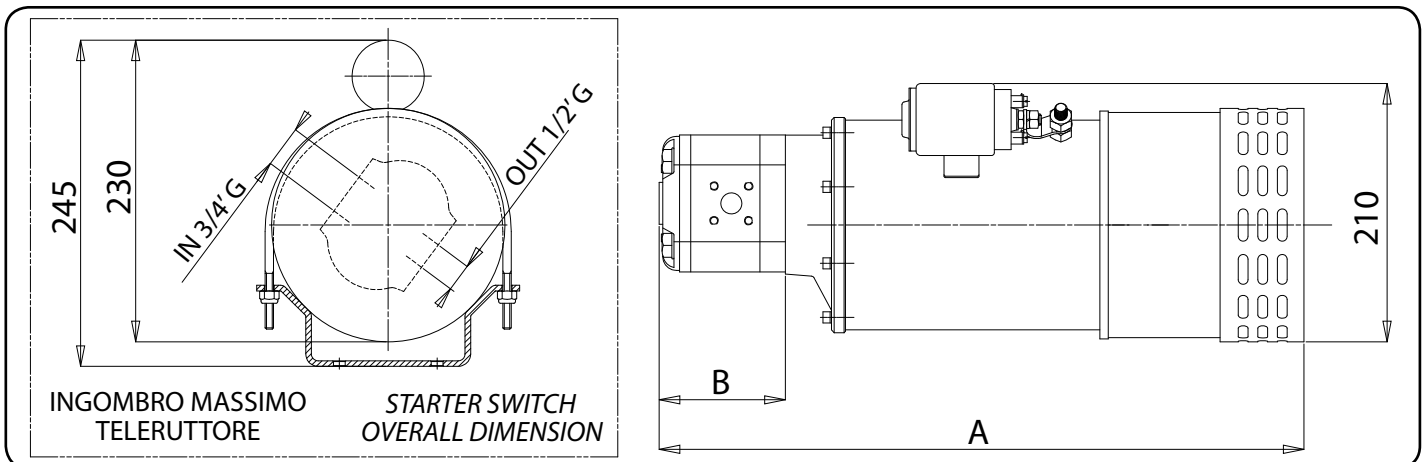
VENTILATED POWER UNIT
4500W WITH THERMO PROTECTION

SERIE
SERIES

ELP
ventilato/ventilated



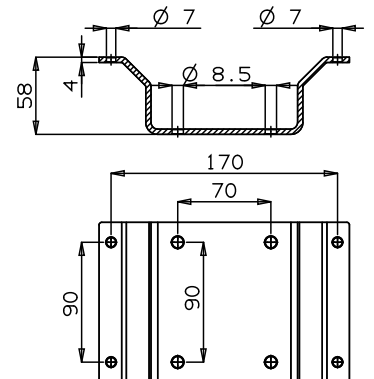
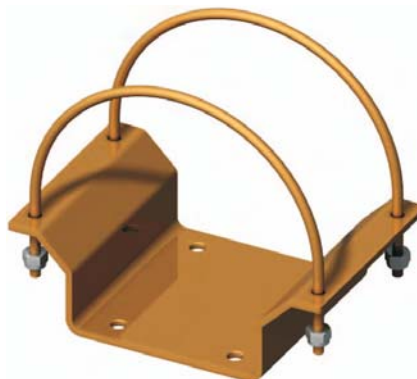
Fluido idraulico Fluid	Olio minerale Mineral oil based hydraulic fluid
Temperatura olio Oil temperature	-15 ÷ 80 °C
Viscosità Olio Oil viscosity	Da 12 a 100 cSt max. 750 cSt 12 up to 100 cSt max. 750 cSt
Grado di filtrazione Oil filtering	> 200 bar: 10 µm < 200 bar: 25 µm
Pressione di aspirazione Inlet pressure	0,7 ÷ 3 bar (Axolute)
Senso di rotazione Pump rotation	Unidirezionale (Sinistra) Unidirectional (Left)



Motopompa Pump type	Pompa / Pump Cilindrata Displacement cm ³ /rev.	Motore Motor 4500W 24V	A	B	Peso Weight Kg
			mm	mm	
147-456-00483	4,8				
147-456-00625	6,2		462	90	27,8
147-456-00901	9		466	94	28
147-456-01106	11		470	98	28,2

149-170-00528
Supporto per il fissaggio
della motopompa da ordi-
nare a parte.

Mounting bracket to be ordered
separately.



pag.64

COMPANY WITH QUALITY MANAGEMENT
SYSTEM CERTIFIED BY DNV
= ISO 9001:2008 =

O.M.F.B. S.p.A. Hydraulic Components
We reserve the right to make any changes without notice.
Edition 2009.01 No reproduction, however partial, is permitted.
Via Cave, 7/9 25050 Provaglio d'Iseo (Brescia) Italy Tel.: +39.030.9830611
Fax: +39.030.9839207-208 Internet:www.omfb.it e-mail:info@omfb.it

OMFB
HYDRAULIC COMPONENTS®

Codice fascicolo: 997-400-14710

Data: Lunedì 28 giugno 2010

Codice foglio: 997-147-45605 Rev: //